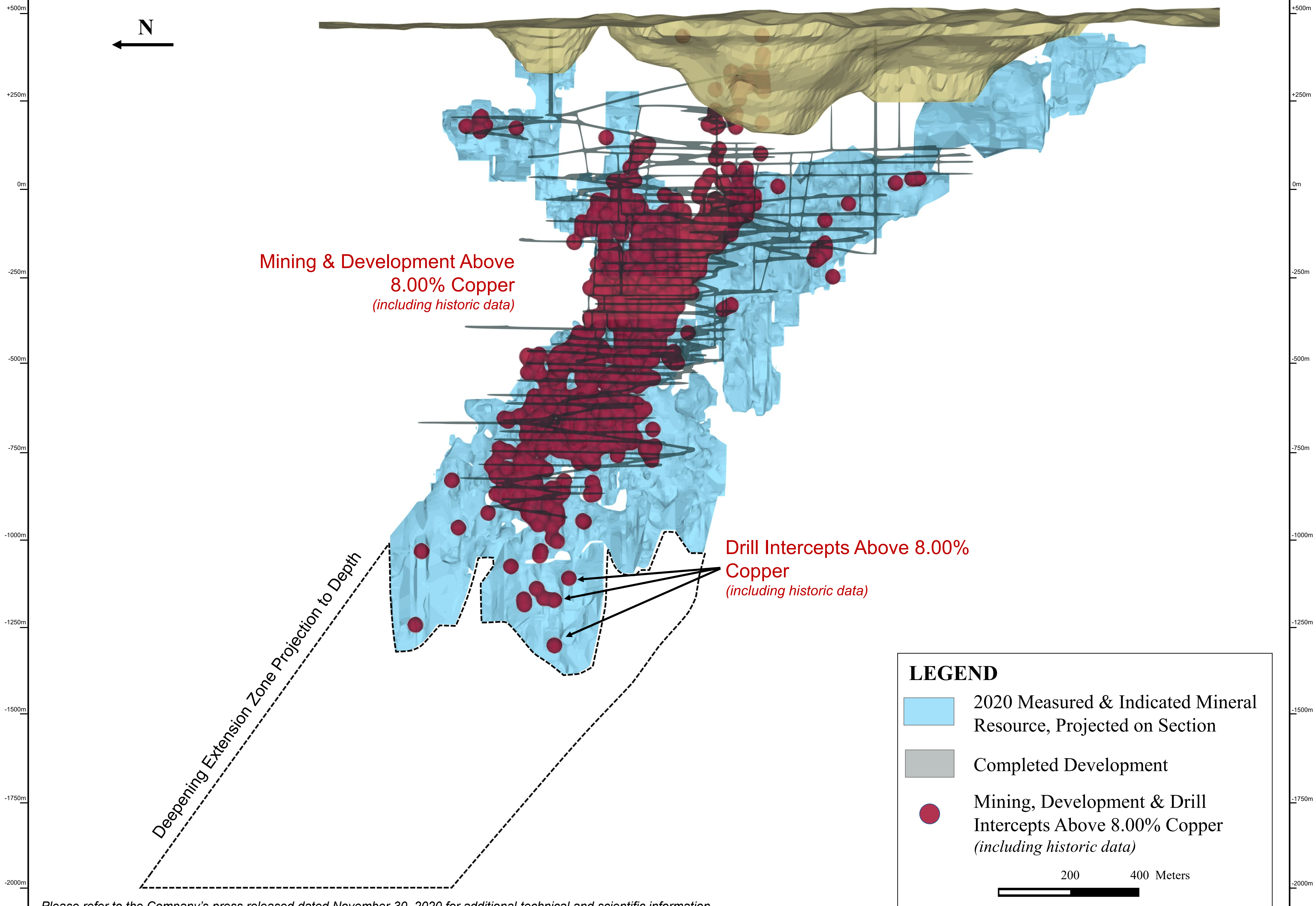


# Figure 1

## Deepening Extension Zone, North-South Long Section



Please refer to the Company's press released dated November 30, 2020 for additional technical and scientific information.

Deepening Extension Zone projection to depth shown to demonstrate future target area for ongoing exploration within the Pilar Mine. The projection is based on compilation work which includes review of geological controls, structural analysis and copper mineralization identified during the Company's technical programs. The interpretation and boundary limits do not imply continuity of mineralization, grade, or actual thickness of mineralization which has yet to be defined. Mining & Development samples and drill intercepts above 8.00% copper represent individual composite assay results and do not imply thickness of mineralization above 8% copper. Mineral resource outline inclusive of mineral reserves. Mineral resources which are not mineral reserves do not have demonstrated economic viability. Please refer to the Company's Vale do Curaçá Property Technical Report dated November 25, 2019 for additional technical and scientific information related to the Pilar Mine.